



ODDO BHF Forum

Virtual conference

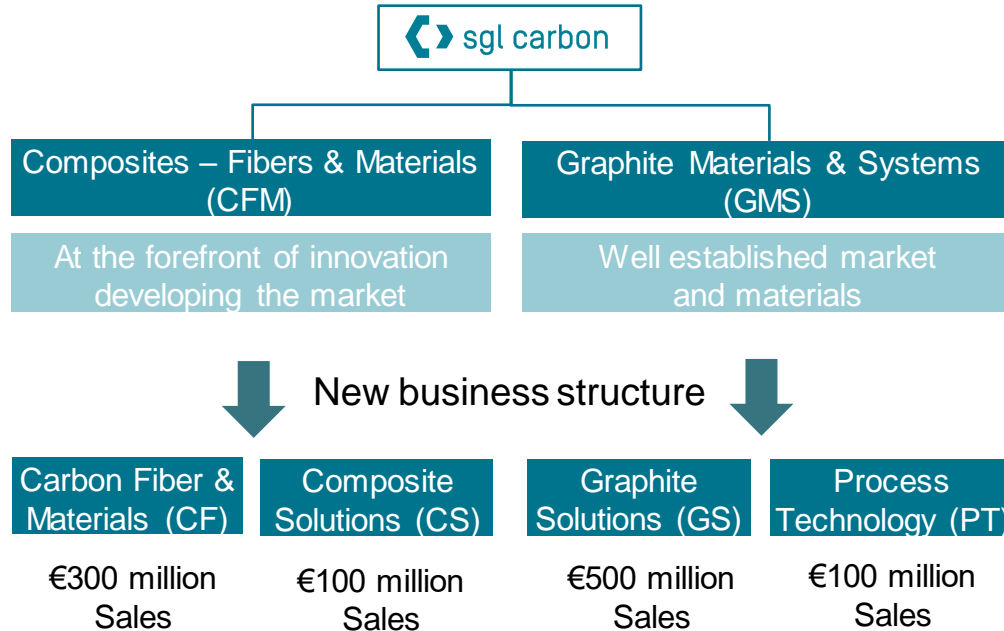
Thomas Dippold CFO | January 2021



1 The Business Model

A global leader in carbon and graphite-based solution

SGL Carbon at a glance



Characteristics

Material competence and application know-how in graphite & carbon fiber / fiber composites as well as high temperature processes

Competitive advantage by providing entire value chain

Diversified customer base, serving key megatrends such as mobility, digitization, energy

New business structure from Jan 1, 2021 onwards to provide more transparency & focus on homogeneous markets

New BU structure – strong positioning and promising drivers

Carbon Fiber & Materials (CF)



- Textiles and precursor
- Oxidised fibers (Panox)
- Carbon fibers
- Fabrics and wovens
- Prepregs

Composite Solutions (CS)



- Composites parts (CF, GF, leaf springs, battery cases)
- Wet friction applications
- Thermal insulation
- Carbon/Carbon products

Graphite Solutions (GS)



- Isostatic and extruded graphite
- Press-to-size products
- Machined, purified and coated parts
- Gas diffusion layer (fuel cell)
- Graphite anode material (LiB)

Process Technology (PT)



- Graphite heat exchangers
- Graphite pumps
- Synthesis systems
- Service and parts
- PTFE products

Main growth drivers

- Wind energy
- Automotive

- Automotive (lightweight and electro mobility)
- Commercial Aerospace

- Fuel cell and Li-ion batteries
- Semiconductors and LED
- Automotive industry

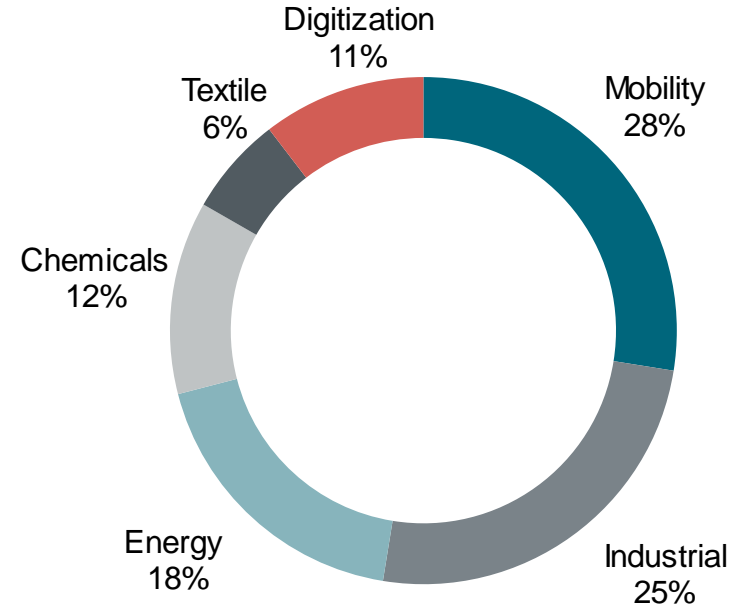
- Chemical and petrochemical industry

SGL Carbon – globally active in attractive markets

Key figures

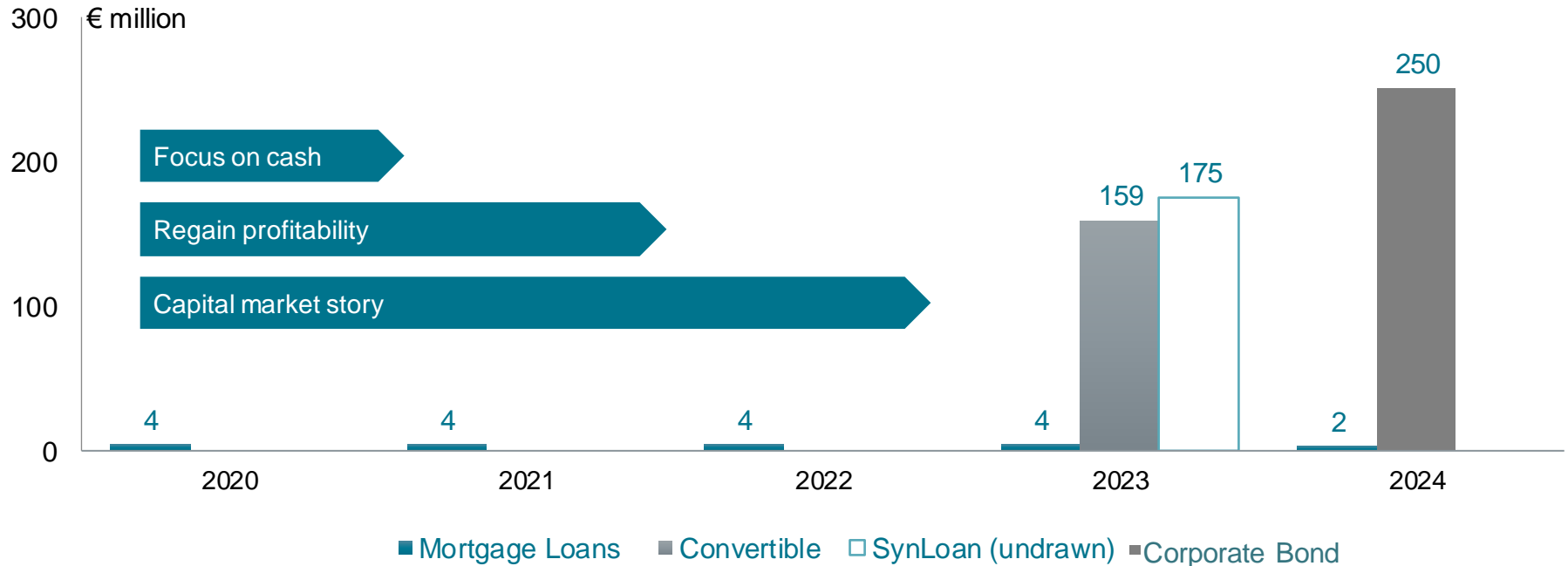
- ~ €0.9 billion Sales
- Low double-digit € million EBIT & margin
- 4,900 employees
- Active in 80 countries, 31 production sites globally

End-market sales split



Limited maturities in coming years allow restructuring

Maturity Profile as of 30.09.2020



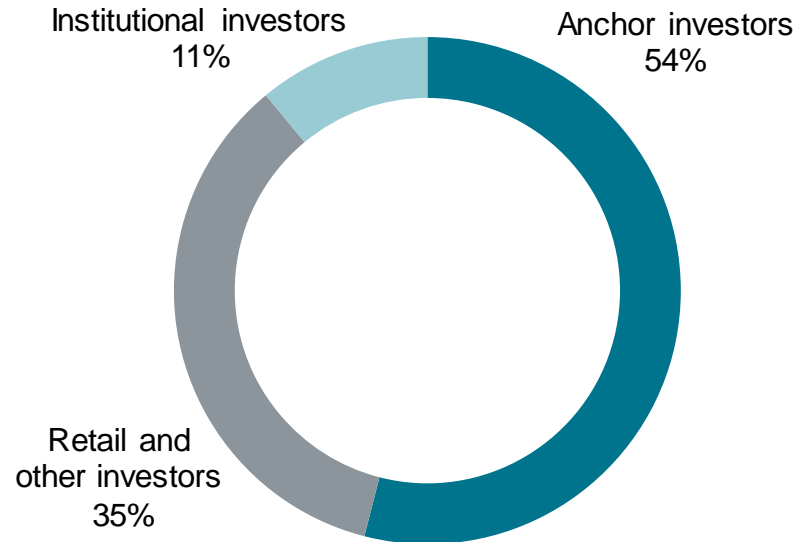
Shareholder structure dominated by anchor shareholders

Anchor investors

Structure:

- SKion GmbH: 28.5% (Investment company of Mrs. Klatten)
- BMW AG: 18.4%
- Volkswagen AG: 7.4%

Shareholder structure



2 New Management – first impressions

Restructuring – New management team has decades of experience

Dr. Torsten Derr, CEO



**24 years industry experience
4 turnarounds in past 15 years**

Thomas Dippold, CFO



**16 years experience in restructuring
3 turnarounds**

Restructuring – Observations



Lack of financial rigor and prioritization



High complexity (sites, products, customers)



Over-administration (~20 corp. functions, complex guidelines)



No full P&L accountability in Business Units



Culture – focus on perfecting technology instead of improving profitability



Restructuring – “Formula Carbon” guidance for mindset and behavior



Business first

In everything we do, our focus is on running our business safely and profitably.

Keep it simple

We no longer afford the luxury of doing things that are not absolutely necessary. We reduce complexity wherever possible.

Deliver on promises

We set ourselves realistic goals, keep our promises and expect the same from our colleagues.

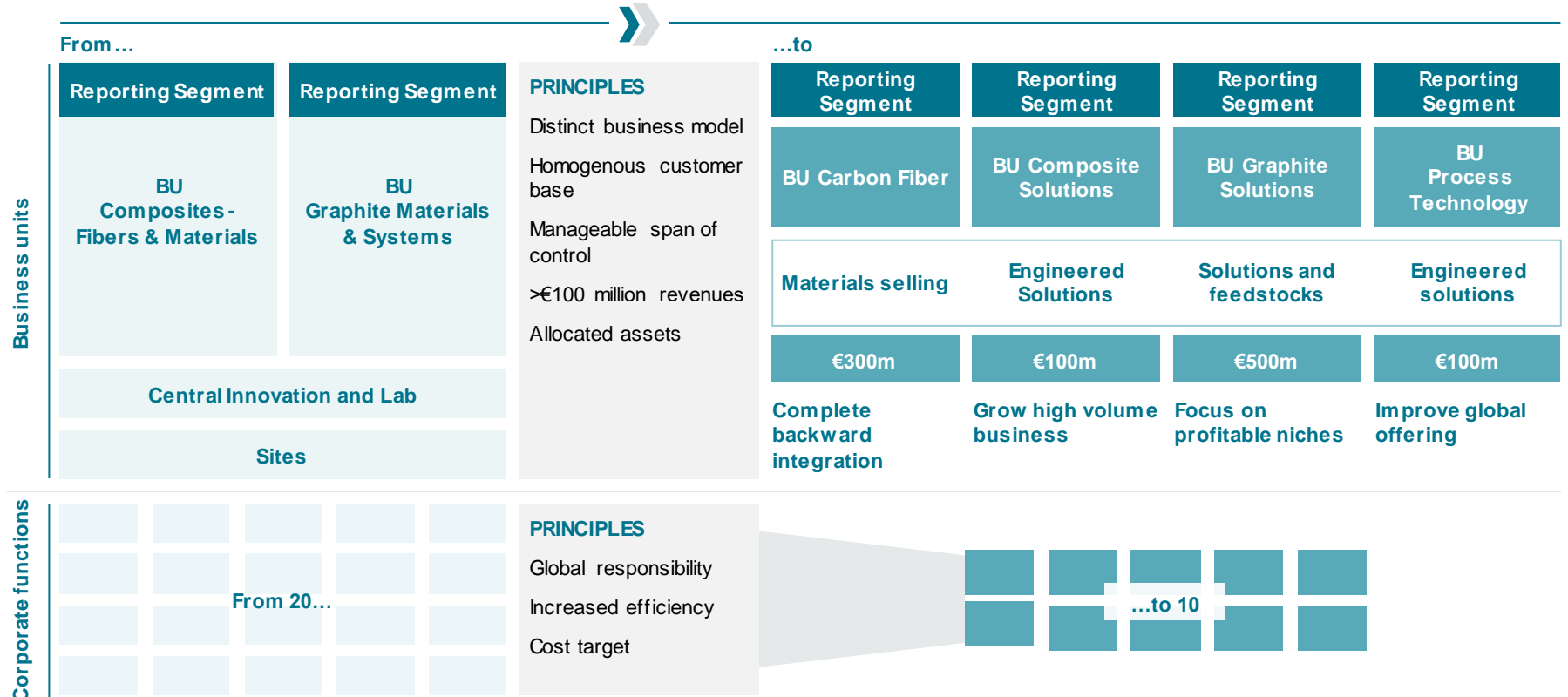
Act fast, think different

We act quickly and solution oriented. And are always open to new approaches.

Formula Carbon

3 Restructuring program launched

New Organization enhances transparency, management rigor and efficiency



Strengthen capital discipline



Establish Capital Structure



Define Financial Policies



Deliver ROCE improvement

Key Priorities

- Be **cash positive** (“stop the bleeding”)
- **Reduce net debt** to reasonable level
- **Question cash-burning** entities and businesses
- Businesses compete for a **fixed capex budget**
- Strengthen **project approval process**
- Improve **working capital management**
- Maintain sufficient liquidity **headroom**
- **Stop unprofitable** projects/activities
- Focus on **investments with near-term payback**
- Be **cost efficient**
- Generate enough cash flow to **self-fund moderate growth** path and pay a modest dividend

Restructuring program started in October 2020

New Organization

- New organization and management
- Clear responsibilities & consequence management
- Incentives to be aligned to cash generation

Improved Performance

- >€100 million earnings improvement measures¹ from 2023 onwards
- >500 individual measures identified
- >500 reduction in FTE¹

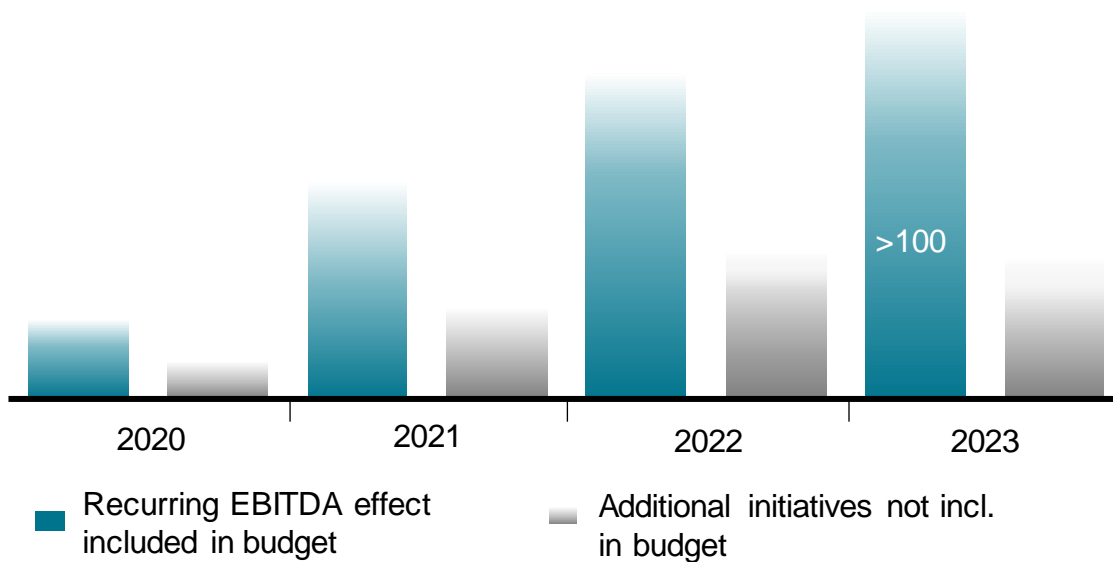
Spend Control

- Hiring freeze - Board approval needed
- Spend control tower
- CAPEX discipline

¹Compared to base year 2019

Restructuring – EBITDA impact of restructuring initiatives

Net recurring impact¹ in € million



Key measures

- Total restructuring costs of ~ €40 million; half in Q4/2020
- Overall >670 initiatives with a contribution of >€100 million EBITDA
- Strict consequence management & counter-measures
- Additional cash potential from NWC initiatives

¹ versus 2019, before external counter effects

Impairment charge of €80-100 million in Carbon Fibers in Q4/2020

Details of impairment loss in reporting segment CFM (Composites – Fibers & Materials)

- Non-cash impairment charge of €80-100 million to be recorded in non-recurring items in Q4/2020
 - New 5-year plan: prospects for certain markets changed considerably
 - Impaired assets: approx. 20% goodwill and 80% property, plant & equipment

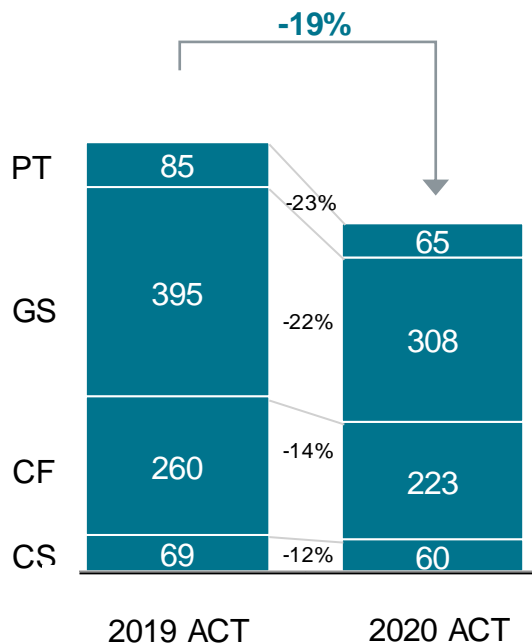
Reason for Impairment

- Automotive
 - Industry on the whole challenged – new drives, new competitors, increased pressure from legislation
 - Less focus on lightweight construction - carbon fiber composites adoption in automotive slower than initially planned
- Aerospace
 - Civil aviation extensively affected by Corona crisis
 - Recovery to 2019 levels not expected before 2024/2025, reduced built rates in airplanes
- Wind Energy
 - Strong growth in market and for SGL large-tow carbon fiber
 - Lower margin expectations compared to automotive and aerospace

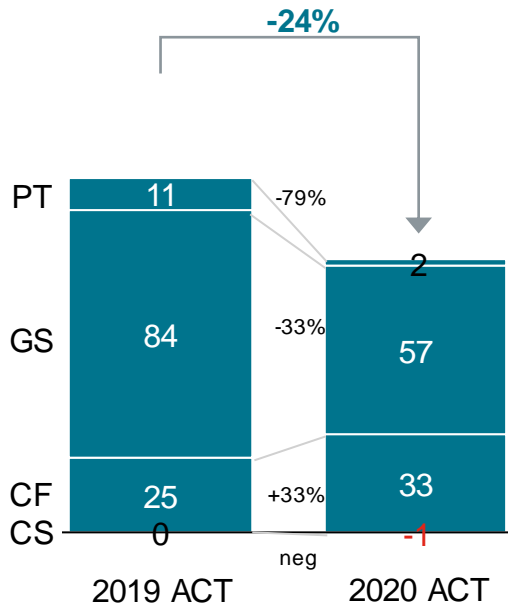
Business units impacted by Covid-19

9M 2019 vs 9M 2020 Actuals

Sales¹, € million



EBITDA¹, € million



Sales

- PT, GS strongly impacted due to pandemic economic slow down
- CF: strong wind business could compensate partly for slow down in other business
- CS: new projects could compensate for shut-downs in Q2

EBITDA

- PT and GS decline, due to low sales
- CF improvement due to efficiency measures initiated in 2019
- CS decline due to automotive shut-down in Q2

¹BU split is preliminary and un-audited, notably Corporate expenses not yet allocated, LAC completely in BU CF

4 Summary

SGL Carbon – Restructuring based on solid Carbon competence

Market Dynamics

- Material competence based on **carbon**¹ and **high temperature processes** (command **entire** carbon fiber and graphite **value chain**)
- **High tech** carbon fiber & graphite based **engineered solutions**
- **Diversified customer base** – servicing more than 35 industries with structural growth perspective
- **Sales growth** will be fueled by the **megatrends energy, mobility** and **digitization** – with some trends (e.g. in digitization and sustainability) even gaining momentum due to the Corona crisis

Financials

- **Restructuring**, cost and headcount reduction started
- **No maturities** of financial instruments until September 2023
- Strong **anchor shareholders**

¹ Carbon refers to the chemical element – graphite and carbon fiber are forms of carbon

Outlook – Focus now on performance, later on profitable growth

Short term

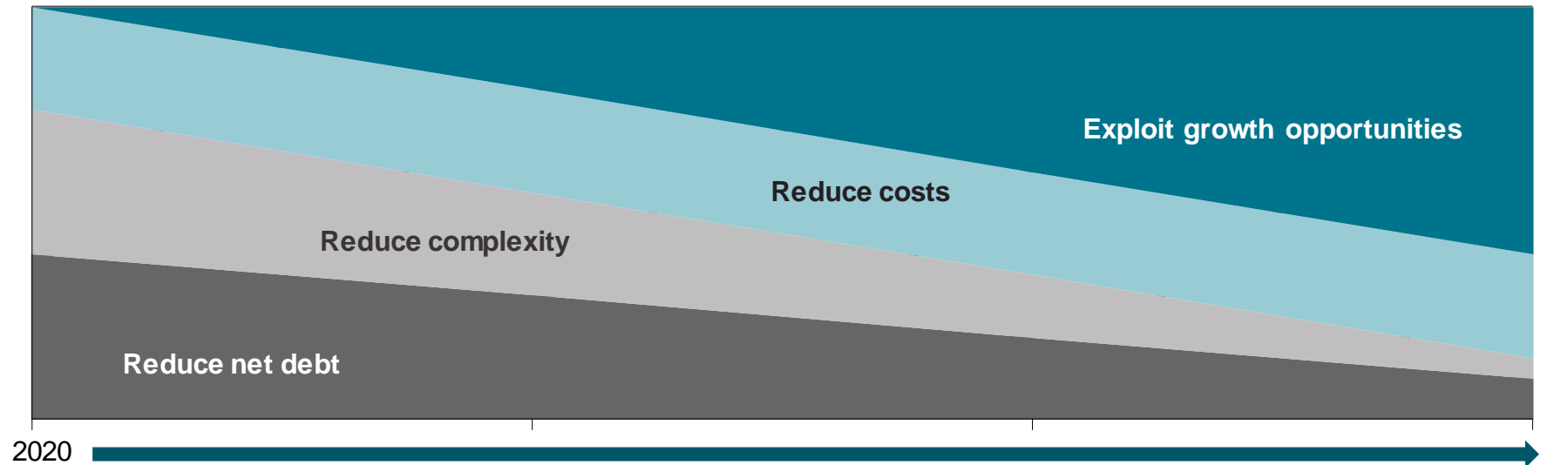
- Secure financial headroom
- Stabilize operational performance

Mid term

- Achieve satisfactory net debt level
- Selective investments

Long term

- Step up investments in market opportunities





Thank you for your attention!

New CEO Dr. Torsten Derr

- Born and raised in Bremen, northern Germany
- Studied and completed PhD in Chemistry in Bremen
- Started professional career
 - 10 years Bayer AG in various roles
 - 10 years Lanxess AG (Business Unit Head)
 - 4 years Saltigo GmbH, subsidiary of Lanxess AG (CEO)
- Overall 23 years experience in technology focused industries, of which 15 years with P&L responsibility
- Focus on restructuring & turnarounds
- “SGL Carbon and I are a good fit, I know how to manage technology focused businesses with an appropriate cost structure and a clear focus on market requirements”



New CFO Thomas Dippold

- Born and raised in Bamberg, southern Germany
- Studied and completed Business Administration degrees in Bamberg (D), Mainz (D) and Austin, Texas (USA)
- Started professional career at HSBC in Düsseldorf and London in Reporting, followed by Consulting Services
- Various Finance roles at Schott AG (D and Singapore)
- CFO at Semikron International in Nürnberg (D)
- CFO at Faber-Castell AG, Stein (D)
- CFO of stock exchange-listed Schaltbau Holding AG
- Overall 23 years experience in various finance roles, with particular focus on successful operational and financial restructuring and turnaround situations
- "I am fascinated by the Company's materials portfolio and competence and aim to support SGL Carbon's turnaround and sustainable path to profitability based on my restructuring expertise"



5 Backup Business Units

Composites – Fibers & Materials (CFM) – 1

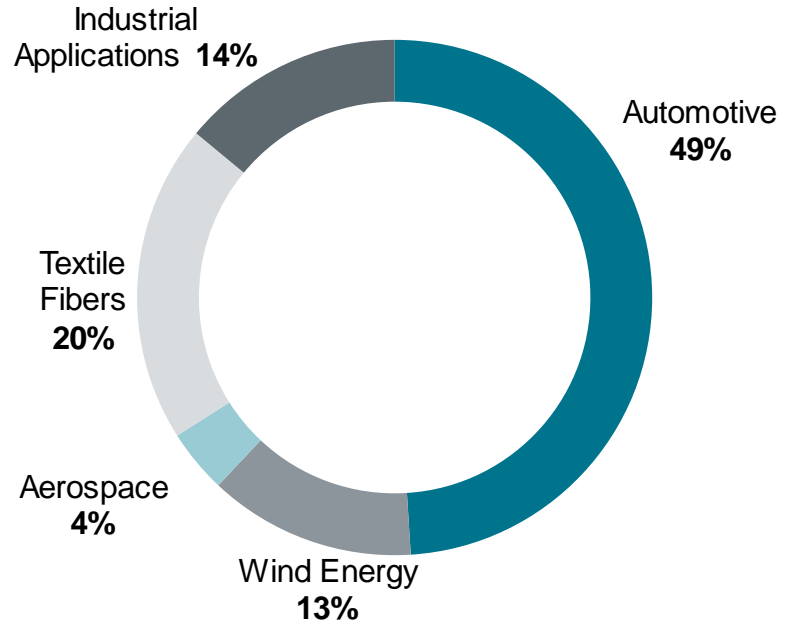
Activities

- Carbon Fibers
- Composite Materials
- Composite Components
- Ceramic Brake Discs (JV with Brembo)

Key industries served

- Automotive
- Aerospace
- Energy
- Industrial Applications
- Textile Fibers

CFM sales 2019 [%]



Composites – Fibers & Materials (CFM) – 2

Characteristics

- New applications in automotive, energy, industrial
- High earnings improvement potential
- Complete value chain in house

Strategic priorities

- Strengthen capabilities to safeguard globally leading position
- Develop products and production technologies for innovative customer solutions
- Exploit synergies across the value chain

CFM key figures

in € million	2018	2019	9M/ 2020
Sales	422.5	431.6	283.4
EBIT ¹	20.8	-8.3	10.6
EBIT-margin ¹	4.9%	-1.9%	3.7%
ROCE _{EBIT} ¹	3.2%	-1.3%	0.7%
Capex	21.5	27.8	10.4
Headcount	1,722	1,698	1,614

¹ before non-recurring-items

Graphite Materials & Systems (GMS) – 1

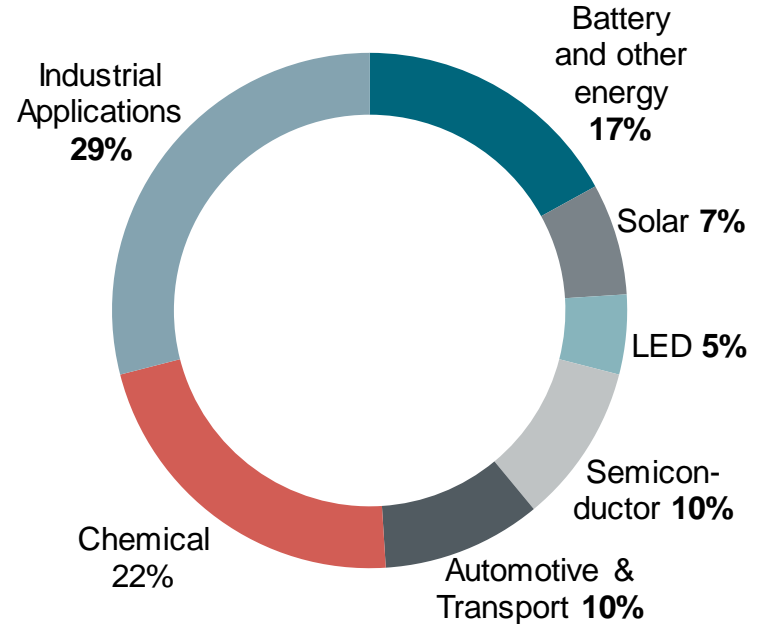
Activities

- Anode materials
- Isostatic graphite
- Fiber materials
- Extruded graphite
- Die molded
- Expanded graphite
- Process technology

Key industries served

- Semiconductor
- LED
- Fuel Cell
- Lithium-Ion Battery
- Solar
- Automotive & Transport
- Chemical
- Industrial Applications¹

GMS sales 2019 [%]



¹ e.g. electric discharge machining (EDM), oil and gas, glass, high temperature applications, metallurgy

Graphite Materials & Systems (GMS) – 2

Characteristics

- Higher value-added products enabling customer innovations
- Specialized, partially tailor-made, products for differentiated customers
- Innovation driven business
- Engineered products & solutions for customers from > 35 industries – some with high growth potential

Strategic priorities

- Focus on forward integration and innovation
- Combine material know-how and engineering competence
- Advanced material, equipment, and process solutions in cooperation with customers
- Global competence and presence
- Improve cost competitiveness
- Target new market segments

GMS key figures

in € million	2018	2019	9M/ 2020
Sales	589.9	622.5	373.1
EBIT ¹	76.0	85.5	35.4
EBIT-margin ¹	12.9%	13.7%	9.5%
ROCE _{EBIT} ¹	16.5%	16.3%	8.7%
Capex	47.0	55.8	18.8
Headcount	3,008	3,141	3,088

¹ before non-recurring-items

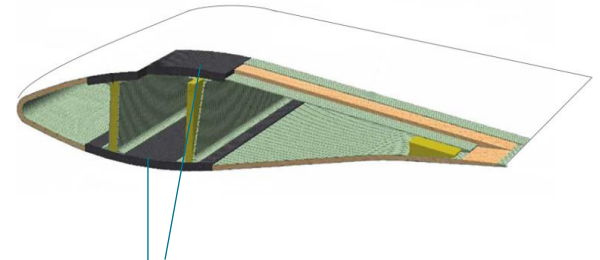
6 Attractive Products from various Business Units

Wind energy – benefiting from trend to sustainable power generation

Trend to longer rotor blades in our favour

- Reasons for usage of such products
 - **High stiffness** and **high strength** of carbon fibers
 - **Global footprint** with modern production facilities
 - Well established expertise and long term strategy of SGL in running industrial grade heavy-tow carbon fiber for **high volume application**
- Market dynamics
 - Strong growth in sustainable power generation
 - Usage of carbon fiber mainly for pultrusion components
- Participation of SGL Carbon
 - SGL carbon fiber is qualified for nearly all OEM
 - Strong capacity utilization of our carbon fiber plants in Moses Lake (USA) and Muir of Ord (UK)
 - Clear focus on Carbon Fiber tow, full access to all levels of the market

Wind turbine



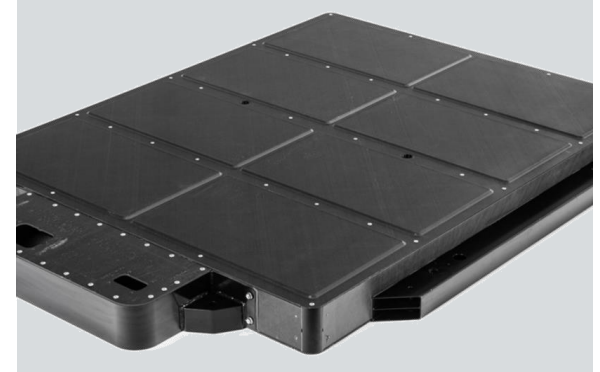
Cross section of a rotor blade


Carbon fiber spar caps usually manufactured out of CF **pultruded profiles**, CF non-crimp fabric or CF prepreg

Components for Battery Cases – an attractive application

Benefiting from strong growth of e-mobility

- Key benefits
 - **Safety** for passengers and other traffic participants (fire, crash, impact, electromagnetic shielding)
 - **Weight reduction** up to 40 % compared to metals
 - **Thermal insulation**
 - produced in a **highly automated process** leading to **competitive cost-performance-ratio**
- Market dynamics
 - CAGR of around 40% (electric vehicle market '20-'28)
 - CAGR of 70% (long fiber composite battery case components '18-'25)
- Participation of SGL Carbon
 - Usage of full value chain; from precursor to component
 - One-stop shop from engineering to production
 - Industry leader for high volume composite components



Battery Case prototype built with  NIO

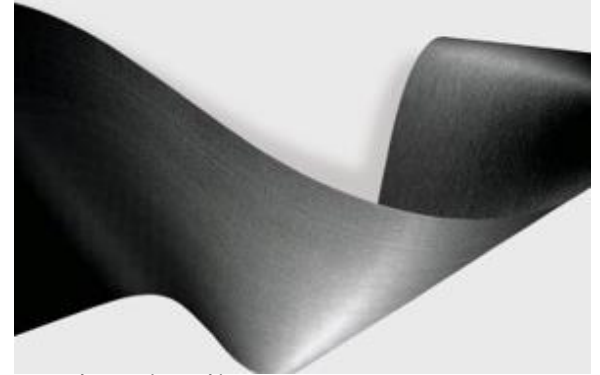


Main focus & potential on Top & Bottom plate

Gas Diffusion Layers (GDL) with strong market growth in Asia

Non-replaceable component in Fuel Cells

- Reasons for usage of such products
 - **Enhancing efficiency** of a fuel cell by:
 - homogenizing gas distribution
 - reducing electrical resistance
 - Additional potential due to **usage in electrolysis cells** for the manufacturing of hydrogen
- Market dynamics/size
 - Benefiting from strong growth in e-mobility
 - CAGR of 40%
 - Market size 2025: €500 million
 - SGL Carbon amongst TOP 2 suppliers
- Participation of SGL Carbon:
 - Long term contracts with leading OEMs (e.g. Hyundai)
 - Global sales footprint of more than 200 customers



Gas Diffusion Layer (GDL)

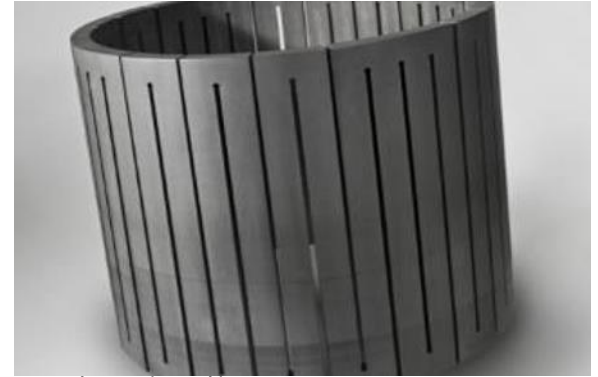


Fuel Cell Stack

Semiconductor – strong demand from new technologies requiring dedicated solutions made from graphite specialties

Megatrends drive double-digit market growth

- Reasons for usage of such products
 - **Silicon-based semiconductors:** e.g. in 5G networks, high performance computing in memory & logic chips
 - **SiC-based semiconductors:** electrified vehicles need Power Electronics
- Market dynamics/size
 - Silicon-based semiconductor expected to grow 5-7% pa
 - SiC will see growth of 20-40% pa from 2022/23 (technology breakthrough)
- Participation of SGL Carbon
 - SGL offers customized solutions, combining isostatic graphite, carbon-carbon composites as well as insulation materials
 - Tailored materials, enabled by full backwards integration
 - Precision-machined, purified and/or surface treated
 - Working with global leaders in their respective field



Meander heater for the production of Si-based singlecrystals



SiC-coated wafer carrier

Graphite Anode Materials (GAM) for Lithium-Ion-Batteries

Graphite will remain the dominant material

- Reasons for usage of such products
 - Graphite is the **perfect material**, with synthetic graphite being superior compared to natural graphite
 - High **cycle stability** and good fast charging performance
 - **Scalable production** processes to market demand
- Market dynamics/size
 - Benefiting from strong growth in e-mobility and stationary power storage; GAM demand from announced EU LiB factory plans ca. 400 t/a by 2025
 - CAGR (2020-25): 30%; Market size (2025): €5.8 billion
- Participation of SGL Carbon
 - Tailor-made products based on SGL synthetic graphite
 - Superior position of SGL in fast growing market Europe
 - In different stages of qualification at cell makers and OEM
 - European project funding potential under IPCEI
 - SGL offers services via its Battery Application Lab



Synthetic
graphite powder



Battery
Application
Laboratory

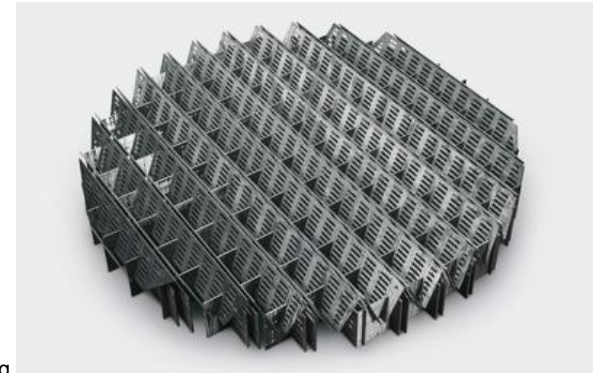
SIGRABOND® Chemical column internals based on CFRC

Benchmark in state-of-the-art column design

- Reasons for usage of such products:
 - **Weight advantage** of factor 3 to 5 compared to alternative materials like exotic metals, plastics or ceramics
 - **Corrosion** and **temperature resistance** up to 1000°C
- Market dynamics/size:
 - Estimated accessible market size €30-50 million
 - Mainly driven by debottlenecking activities in Western markets and upcoming requests for projects in Asia (e.g. CN)
- Participation of SGL Carbon:
 - SGL is unique solution provider globally
 - Sales of single components up to full column solutions
 - Based on inhouse engineering



Liquid distributor
3200 mm in
channel design



Support grid
optimized for
random packing

7 Outlook FY 2020

Reporting segment outlook FY2020

CFM

- **Sales revenues** to decline by approximately 10%
 - Cost saving capacity adjustments (conversion of one line to precursor for carbon fiber production and idling of two lines) in **Textile Fibers** and Covid-19-driven demand decline from **Automotive**
 - Partially compensated by strong demand increase in market segment **Wind Energy**
- **Recurring EBIT** to improve to a slightly positive result
 - Negative earnings effects of pandemic-driven lower sales revenues mitigated with personnel measures such as short-time work as well as various spending reductions and postponements
 - Earnings improvement measures implemented in **Textile Fibers** in H2/2019
 - Price increases in **Wind Energy** business implemented early 2020

Reporting segment outlook FY2020

GMS and Corporate

GMS

- **Sales revenues** to decline by approx. 20% due to weaker demand in all market segments with exception of **Semiconductors**, which is expected to grow slightly
- **Recurring EBIT** expected to decline by at least 50% YoY
 - Due to reduced sales revenue expectations as described above and resulting substantially lower capacity utilization

Corporate

- Expected substantial deterioration in **operating recurring EBIT** can mainly be attributed to
 - Expected higher consulting costs in the reporting period
 - Prior year benefiting from one-time gains from services provided to the buyer of the former PP-activities

Group outlook FY 2020. Net result guidance adjusted for impairment charge and restructuring provisions

- Unchanged: Full year **Group sales revenues** to decline by 15-20% YoY; full year **operating Group recurring EBIT** expected to be slightly positive
- **Group recurring EBIT** positively impacted by one-time effects of €8.5 million in Q3/2020 from SDK compensation payment
- Due to restructuring provisions and impairment charges, which will be recorded in the fourth quarter 2020, **net result from continuing operations** is below our prior guidance (improvement to a negative low double-digit million € amount) and below the prior year result of minus €90 million. We now expect net result of minus €130 million to €150 million
- **Capex** guidance unchanged at approx. €60 million
- Unchanged: **Net debt** at YE 2020 to increase by a mid double-digit million € amount due mainly to the payment of the purchase price for SGL Composites USA (USD 62 million)
 - Significantly lower operating result compensated by above mentioned executed additional funding measures
- Given solid liquidity position at end Sept. 2020 (€167 million) plus additional cash inflow in Q4/2020, **liquidity** position remains comfortable despite planned purchase price payment in Q4/2020 and upcoming restructuring expenses
- In addition, we continue to have access to the **syndicated loan** of €175 million, which remains undrawn

8 Latest financials 9M/2020

Composites – Fibers & Materials. Benefited from strong wind energy business and earnings improvement measures

in € million	9M/2020	9M/2019	Δ
Sales revenue	283.4	328.6	-14%
EBITDA ¹	32.0	24.1	33%
EBIT ¹	10.6	-1.8	-
EBIT ¹ -Margin (in %)	3.7	-0.5	-
ROCE _{EBIT} ¹ (in %)	0.7	-0.3	-

- Q3/2020 recovered from Covid-19 pandemic weakened Q2/2020 with EBIT turning substantially positive
- **Sales revenue** in 9M/2020 down 14% (no currency impact)
 - Strongest % decline as expected in market segment **Textile Fibers** due to idling of two acrylic fiber lines and conversion of one acrylic fiber line to precursor (part of earnings improvement measures initiated at the end of 2019)
 - Corona-related negative developments in market segments **Automotive** and **Industrial Applications**
 - Sales in **Wind Energy** increased by more than 60% – stronger growth than initially expected
 - **Aerospace** remained relatively stable on a low level
- **EBIT**¹ in 9M/2020 increased substantially from low level in 9M/2019
 - Substantially improved results in **Wind Energy** as well as implement **earnings improvement measures** only slightly offset by weaker **Automotive** business and approx. €4 million lower earnings contribution from At-Equity accounted investments

¹Before non-recurring items of minus€7.6 million in 9M/2020 and minus€81.0 million in 9M/2019

Graphite Materials & Systems. Increased Covid-19 impact in Q3/2020 due to late-cyclical nature of business

in € million	9M/2020	9M/2019	Δ
Sales revenue	373.1	480.1	-22%
EBITDA ¹	59.1	94.8	-38%
EBIT ¹	35.4	74.5	-52%
EBIT ¹ -Margin (in %)	9.5	15.5	-
ROCE _{EBIT} ¹ (in %)	8.7	17.5	-

- Increasing impact from Covid-19 pandemic in Q3/2020 – sales down by 25% YoY, EBIT down by 55% YoY
- **Sales revenue** in 9M/2020 down 22% (no material currency impact)
 - All market segments declined compared to prior year period except **Semiconductors**, which grew by a low double-digit percentage
 - Related to expected lower demand in Battery & other Energy due to changes in supply chain of our customer as well as pandemic-driven lower business volumes in most market segments
- **EBIT** in 9M/2020 decreased by 52% from record level in prior year
 - IFRS 15 effect alone contributed roughly €10 million to earnings decline
 - In line with sales revenue, almost all markets segments recorded lower earnings compared to prior year period
 - Only market segments **Semiconductor** and **Automotive & Transport** remained stable and close to prior year level

¹Adjusted to reflect the reclassification of the business with gas diffusion layers from Corporate

Corporate. Sales and EBIT benefited from compensation agreement with Showa Denko

in € million	9M/2020	9M/2019 ¹	Δ
Sales revenue	27.0	23.7	14%
- of which Central Innovation	1.1	0.7	57%
EBITDA	-5.1	-11.7	56%
Recurring EBIT ²	-12.1	-18.5	35%
EBIT (reported)	-13.6	-18.5	27%
- of which Central Innovation	-7.2	-7.5	4%
Operating recurring EBIT ³	-20.6	-18.5	-11%

- In July 2020, SGL and Showa Denko (SDK) mutually agreed to prematurely terminate all contractual relationships between the two parties against a low double-digit million € compensation payment from SDK. An amount of €8.5 million of the compensation related to the early termination of rental and service contracts and was recorded as positive one-time effects in **sales revenue** and **recurring EBIT** in Q3/2020
- **Sales revenue** increased by 14% (no currency effect), **recurring EBIT** by approx. 35% due to the agreement with SDK
- **Operating recurring EBIT** remained 11% below prior year level as expected due to higher consultancy costs and lower services provided to divested business units (former Business Unit Performance Products resp. PP)

¹Adjusted to reflect the reclassification of the business with gas diffusion layers to the reporting segment GMS; ²EBIT before non-recurring items of minus €1.5 million in 9M/2020; ³EBIT before positive one-time effects of €8.5 million and non-recurring items of minus €1.5 million in 9M/2020

Group P&L. Despite improved net financial result, significant recurring EBIT decline leads to slight loss in net result – 1

in € million	9M/2020	9M/2019	Δ
Sales revenue	683.5	832.4	-18%
EBITDA before non-recurring items	86.0	107.2	-20%
EBIT before non-recurring items	33.9	54.2	-38%
<i>ROCE_{EBIT} (in %)</i>	2.3	4.7	-
Non-recurring items/Impairment charge	-9.1	-81.0	-89%
EBIT	24.8	-26.8	-

- Drivers of **Group sales revenue, recurring EBIT, and operating recurring EBIT** development described on prior pages

Group P&L. Despite improved net financial result, significant recurring EBIT decline leads to slight loss in net result – 2

in € million	9M/2020	9M/2019	Δ
Net financial result	-23.4	-32.6	28%
Profit/loss before tax	1.4	-59.4	-
Income tax expense, non controlling interests, results from discontinued activities	-5.3	-15.1	65%
Consolidated net result attributable to shareholders of parent company	-3.9	-74.5	95%
Operating EBIT before non-recurring items	25.4	54.2	-53%

- **Net financial result** improved due to
 - Absence of interest expenses for 2015/2020 convertible bond (still included in previous year)
 - Lower interest expenses for pensions in current year
 - Negative one-time impact of €6.3 million from early repurchase of 2015/2020 convertible bond in Q3/2019
- **Net result** of prior year included impairment loss. Net result in reporting period improved, but still slightly negative due to significant decline in recurring EBIT

Group balance sheet. Improved liquidity and solid financial ratios as of September 30, 2020

in € million	30.09.2020	31.12.2019
Equity ratio (in %)	25.6	27.8
Total liquidity	166.8	137.1
Net financial debt	262.4	288.5
Gearing (net debt/equity)	0.71	-0.69
Leverage ratio (net debt/EBITDA)	2.66	2.40

- **Equity ratio** declined slightly mainly due to lower pension discount rate environment in Germany and USA
- Increased **liquidity** to nearly €167 million at end of 9M/2020 compared to approx. €137 million at year-end 2019
 - Despite substantial adverse pandemic-related effects in operations and business development particularly in CFM in Q2 and GMS in Q3, liquidity further increased during ytd 2020
- Improvement in **net financial debt** primarily attributable to positive free cash flow from continuing operations of €43.7 million
 - Slightly offset by repayments for lease liabilities of €13.5 million and payments for discontinued operations of €2.0 million

Group cash flow. Positive free cash flow due to effective working capital management and lower capex

in € million (continuing operations)	9M/2020	9M/2019
Cash flow from operating activities	68.8	29.9
Cash flow from investing activities	-25.1	-39.5
• Capex in property, plant, equipment and intangible assets	-33.2	-50.7
• Cash flow from other investing activities ¹	8.1	11.2
Free cash flow	43.7	-9.6
Free cash flow from discontinued operations	-2.0	-9.8

- **Cash flow from operating activities** improved significantly to €68.8 million from €29.9 million despite lower earnings primarily due to improved net working capital management
- **Free cash flow from continuing operations** improved significantly to €43.7 million from minus €9.6 million in prior year
 - Substantial improvement in operating cash flow
 - Significantly lower capex (-35%) as we push back some expenditures to preserve liquidity in current uncertain environment
- **Free cash flow from discontinued operations** also improved significantly and included a tax payment for prior years for former business unit PP
 - Prior year included cash outflow relating to final settlement payments to buyer of HITCO Aerostructures

¹Dividends received, payments for capital contributions in investments accounted for At-Equity, and other financial assets, payments for acquiring remaining stakes in our joint ventures, proceeds from sale of intangible assets and property, plant and equipment

Financial Development

Quarterly trend of key balance sheet figures

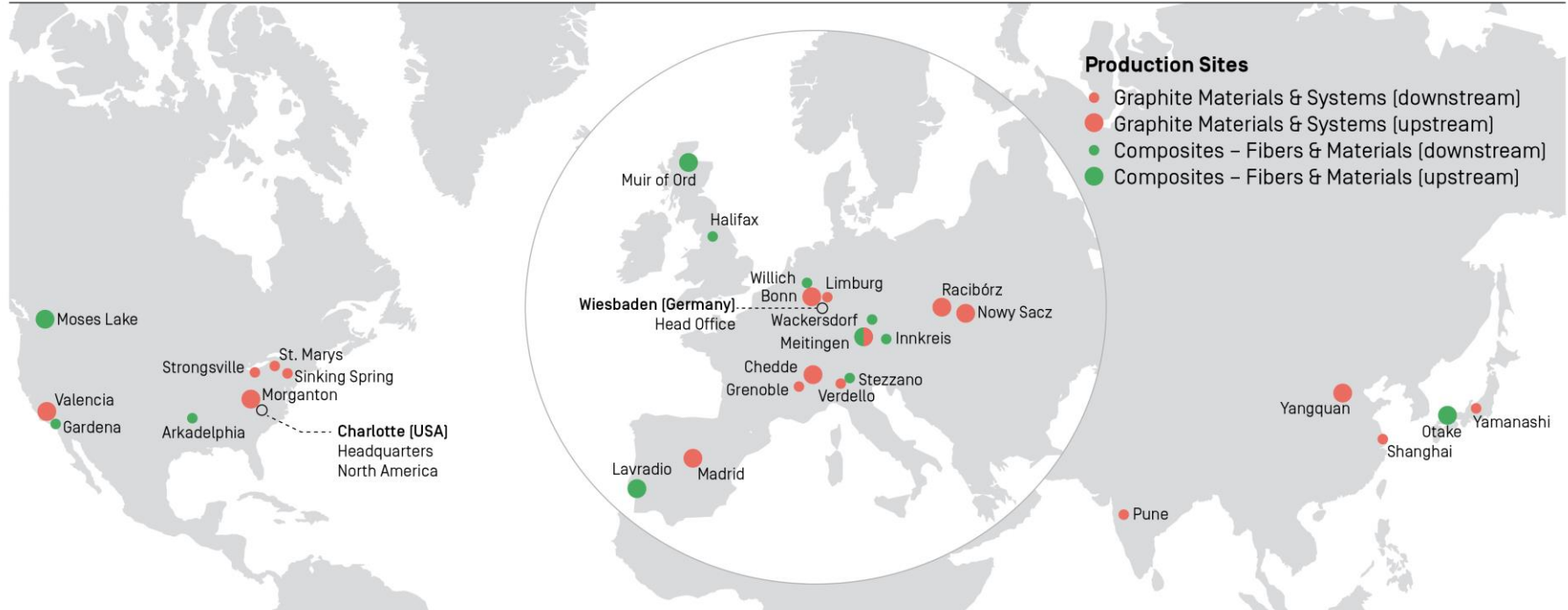
		31.12.2019	31.03.2020	30.06.2020	30.09.2020
Total Net Debt in € million	Total Gross Debt	426	431	430	429
	Cash and cash equivalents	-137	-150	-154	-167
	Total Net Debt	289	281	276	262
	Undrawn credit lines	175	175	175	175
Equity ratio & Gearing	Shareholder equity	419	443	398	372
	Total Assets	1.505	1.500	1.461	1.454
	Gearing	0.69	0.63	0.69	0.71
	Equity ratio	27.8%	29.6%	27.3%	25.6%
Net debt/EBITDA ¹		2.4	2.6	3.0	2.7

¹ before exceptional items

9 Backup various

Global presence

SGL Carbon worldwide sites



Sustainability at SGL Carbon - As a technology-based company, we are aware of our environmental and social responsibility

Environmental	Social	Governance
<ul style="list-style-type: none">• Energy management system ISO 50001-certified from DQS and DEKRA (incl. the non-European sites Moses Lake, Gardena and Arkadelphia)• Electricity from renewable sources in particular at the sites Moses Lake, Wackersdorf and Innkreis• Stringent resource management and reporting (i.e., waste and water)• Assessment of environmental impact of product portfolio	<ul style="list-style-type: none">• SGL Carbon Code of Conduct respecting the principles of the UN Global Compact• Global EHSA policy (safe and healthy working conditions, minimization of environmental impact of our business activities)• Human rights policy incl. grievance mechanisms• Supplier Code of Conduct anchored in general purchasing conditions	<ul style="list-style-type: none">• Distinct sustainability targets for the Board of Management (introduced 2020)• Comprehensive risk management incl. non-financial risks, e.g., climate-related risks• Compliance Management System* incl. whistleblower hotline• Comprehensive compliance training programs (physical and online)• Global Anti-corruption program

Participation in  (first time 2020) and various supplier assessments incl. Ecovadis, IntegrityNext and NQC

Update on COVID-19 impact on our operations

SGL implemented countermeasures very early

- In spring of 2020, SGL Carbon successfully implemented Corona countermeasures early in order to prevent a spread of the COVID-19 virus within the organization and the sites
- These countermeasures were eased during the summer months 2020, but were reinforced in autumn in order to manage the second wave that is still rolling over the northern hemisphere
- At the moment, SGL Carbon has 39 infected employees, and 42 employees are in preventive quarantine
- Since the beginning of the outbreak, a total of 149 employees were infected by Corona, thereof 110 already recovered
- Despite the increasing numbers worldwide, SGL carbon managed to flatten the curve. Almost all infections of SGL employees happened in the private environment.
- Even though the uncertainty regarding a second pandemic wave and an associated further decline in demand due to a recession increased recently, we are able to confirm our guidance for Group sales and Group operating recurring EBIT for fiscal year 2020

Financial calendar/contact details

Financial calendar 2021

March 25, 2021	Annual Report 2020
May 12, 2021	Quarterly Statement as of March 31
May 21, 2021	Annual General Meeting
August 12, 2021	Report on the first half year 2021
November 11, 2021	Statement on the nine months 2021

Contact

SGL Carbon SE

Soehnleinstrasse 8
65201 Wiesbaden
Germany

Phone +49 (0) 611 - 6029 - 103

Fax +49 (0) 611 - 6029 - 101

investor-relations@sglcarbon.com

www.sglcarbon.com

Important Note

This presentation contains statements relating to the future business and financial performance of and future events or developments involving SGL Carbon or its businesses, including statements with respect to SGL Carbon's outlook, targets and business development, expected customer demand, expected industry trends and expected trends in the business environment. You can generally identify these statements by the use of words like "may", "will", "could", "should", "project", "believe", "anticipate", "expect", "plan", "estimate", "forecast", "target," "potential", "intend", "continue" and variations of these words or comparable words. These statements are not historical facts, but rather are based on current expectations, estimates, assumptions and projections about SGL Carbon's businesses and future financial results, and readers should not place undue reliance on them. Forward-looking statements do not guarantee future performance and involve risks and uncertainties. These risks and uncertainties include, without limitation, changes in political, economic, legal and business conditions, particularly relating to SGL Carbon's main customer industries, competitive products and pricing, the ability to achieve sustained growth and profitability in SGL Carbon's businesses, the impact of any manufacturing efficiencies and capacity constraints, widespread adoption of carbon fiber products and components in key end-markets of the SGL Carbon, including the automotive and aviation industries, the inability to execute additional cost savings or restructuring measures, availability of raw materials and critical manufacturing equipment, trade environment, changes in interest rates, exchange rates, tax rates, and regulation, available cash and liquidity, SGL Carbon's ability to refinance its indebtedness, development of the SGL Carbon's pension obligations, share price fluctuation may have on SGL Carbon's financial condition and results of operations and other risks identified in SGL Carbon's financial reports. Should one or more of these risks or uncertainties materialize, or should underlying expectations not occur or assumptions prove incorrect, actual results, performance or achievements of the SGL Carbon may (negatively or positively) vary materially from those described explicitly or implicitly in the relevant forward-looking statement. These forward-looking statements are made only as of the date of this document. SGL Carbon does not undertake to update or revise the forward-looking statements, whether as a result of new information, future events or otherwise.

This document includes supplemental financial measures that are or may be alternative performance measures (non-IFRS or alternative performance measures). These supplemental financial measures should not be viewed in isolation or as alternatives to measures of SGL Carbon's net assets and financial positions or results of operations as presented in accordance with IFRS in SGL Carbon's consolidated financial statements. Other companies that report or describe similarly titled alternative performance measures may calculate them differently.

Due to rounding, numbers presented throughout this and other documents may not add up precisely to the totals provided and percentages may not precisely reflect the absolute figures.