



The new S-Class.

Prof. Dr.-Ing. Thomas Weber
Member of the Board of Management
Group Research &
Mercedes-Benz Cars Development
Berlin, June 2013

DAIMLER

„The King is back!“



The new S-Class: technological pacemaker for automotive development



Three dimensions of new S-Class engineering



New S-Class powertrains
Beating the competition



Mercedes-Benz S 350 BlueTEC:

V6 with the fuel consumption of a four-cylinder engine



190 kW (258 hp)

620 Nm

146 g CO₂/km

5.5 l/100km

Fuel Economy /
Efficiency Label:



Mercedes-Benz S 300 BlueTEC HYBRID:

Highly efficient and lots of fun to drive



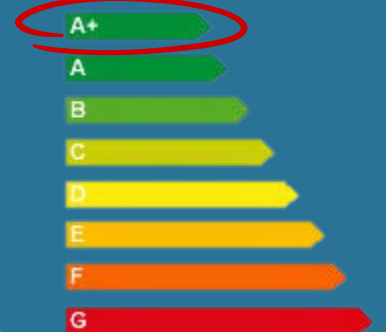
150 + 20 kW

500 + 250 Nm

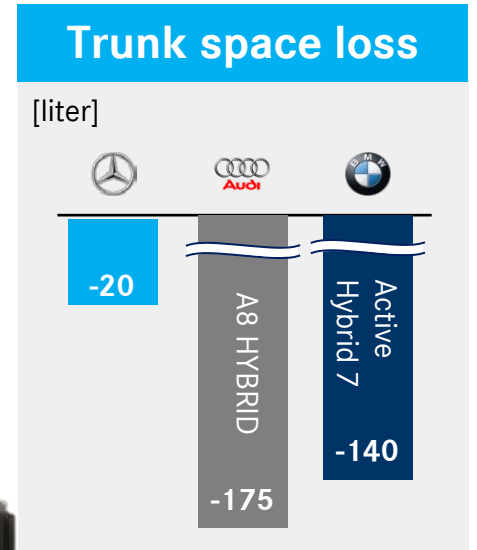
115 g CO₂/km

4.4 l/100km

Fuel Economy /
Efficiency Label:



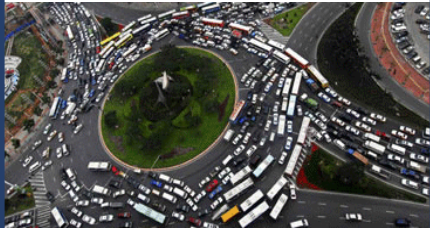
Efficient not only in fuel economy but also in trunk space



Tailor-made hybrids for Mercedes-Benz customers worldwide

Global customers

Premium products
for our customers
worldwide



Diversity

Model lines



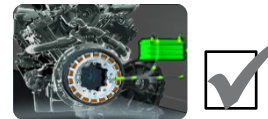
Body types



Gasoline
&
Diesel...



Full-hybrid
&
Plug-In...



Left-
&
Right hand drive...



Hybrid modules

E-motor



Power electronics



HV-battery



...

Hybrid module strategy allows for a cost-efficient customization.

DAIMLER

The S 500 PLUG-IN HYBRID:

Premium performance with about 3-liter per 100 km

245 + 80 kW

480 + 340 Nm

30 km electrical range

3.x l/100km



Emission-free driving in urban areas and pure driving comfort on long distances.

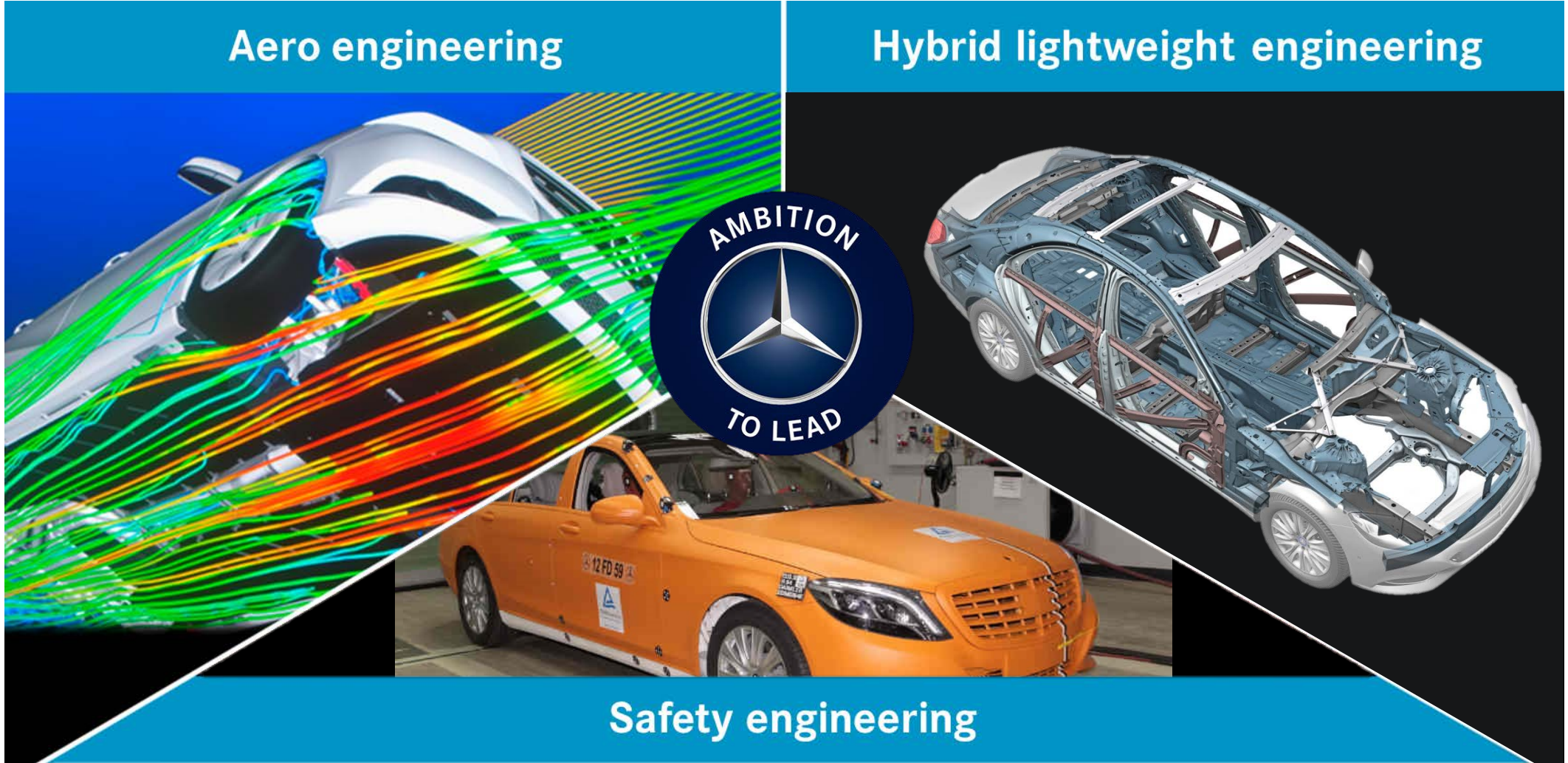
“3D-Body Engineering” allows for a new level of efficiency

Aero engineering

Hybrid lightweight engineering



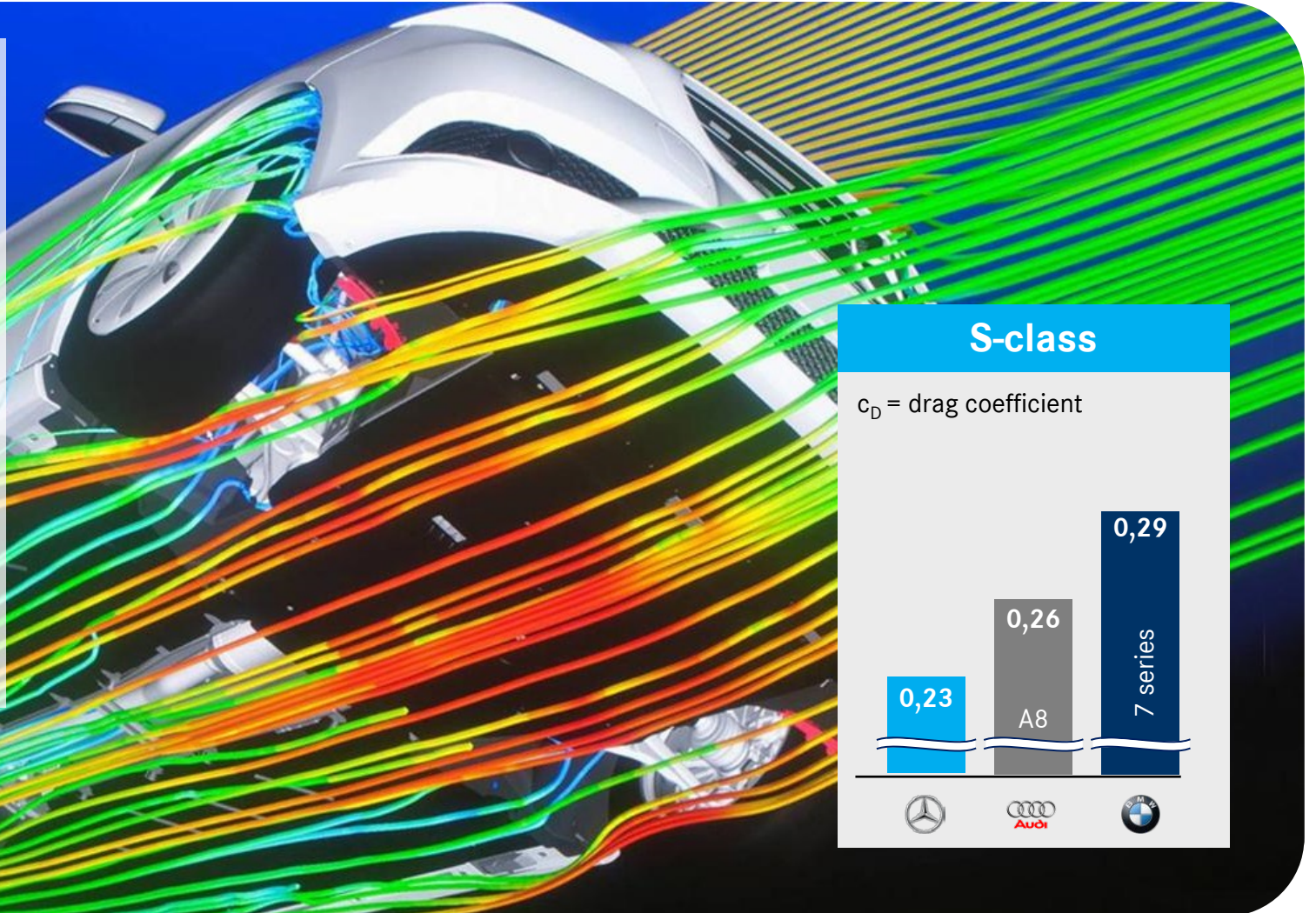
Safety engineering



Mercedes-Benz sets the benchmark in aerodynamics

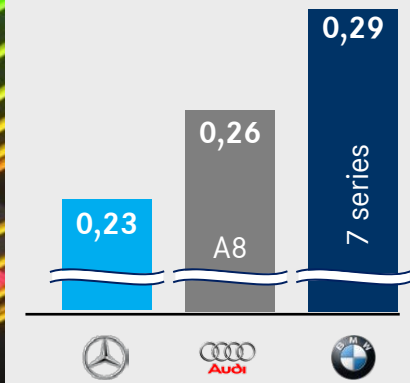
Best in class:

- M-Class $c_d = 0,32$
- E-Class Coupé $c_d = 0,24$
- E-Class Sedan $c_d = 0,25$
- CLS $c_d = 0,26$
- SL $c_d = 0,27$
- B-Class $c_d = 0,26$
- A-Class $c_d = 0,26$
- CLA $c_d = 0,22$

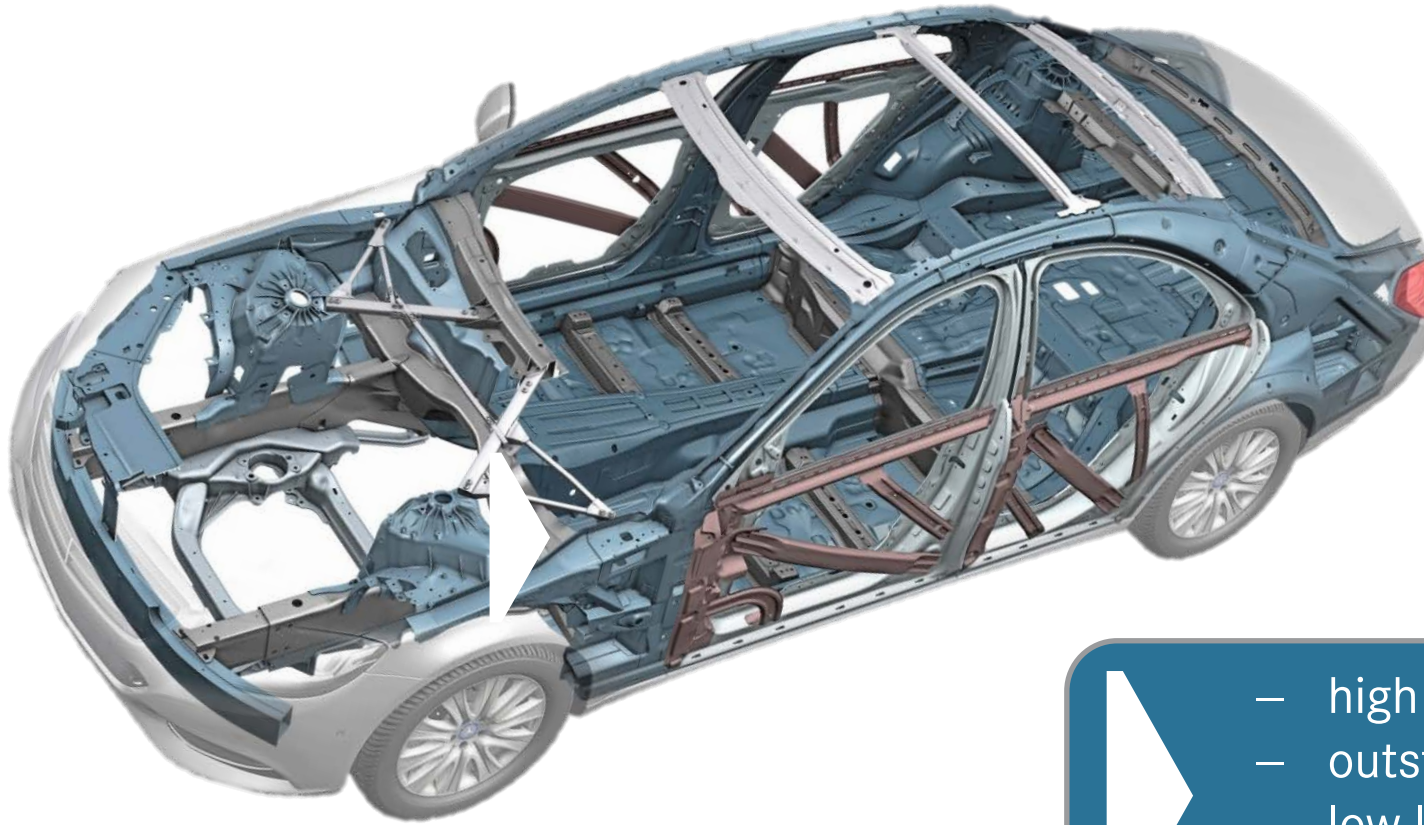


S-class

c_D = drag coefficient



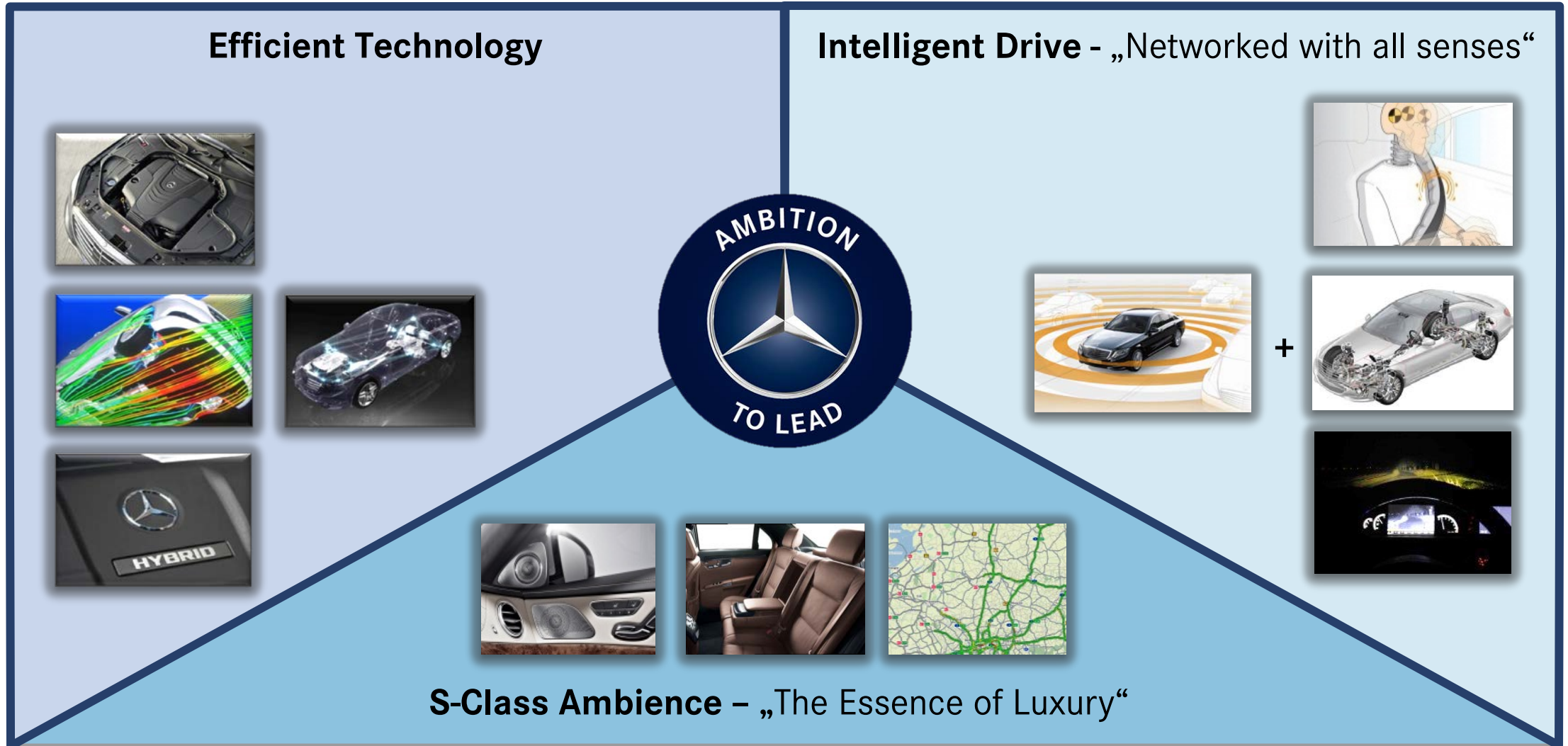
S-Class Body: high-quality lightweight design and top crash safety



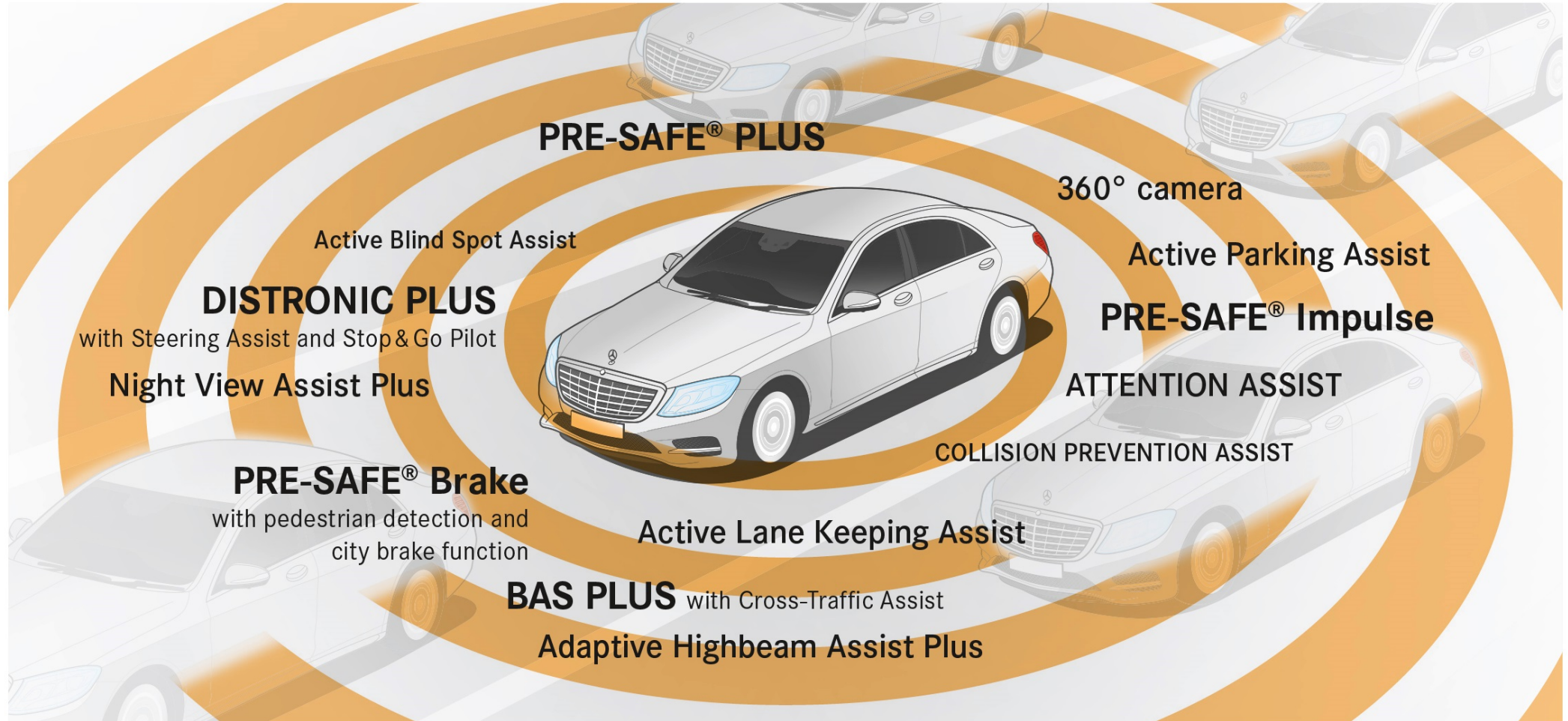
- 3rd gen. **aluminum hybrid body shell**
- share of aluminum > 50%
- implementation of **structural foams**
- safety cell → **high-strength steel**
- highly sophisticated joining technology

- high level of **crash safety**
- outstanding **rigidity** → excellent handling
- low levels of **noise/vibration**
- up to **100 kg** less weight

Three dimensions of new S-Class engineering



All-Round Protection: Mercedes-Benz INTELLIGENT DRIVE



Example: PRE-SAFE® Brake with Pedestrian Recognition



Example: PRE-SAFE[®] Brake with Pedestrian Recognition

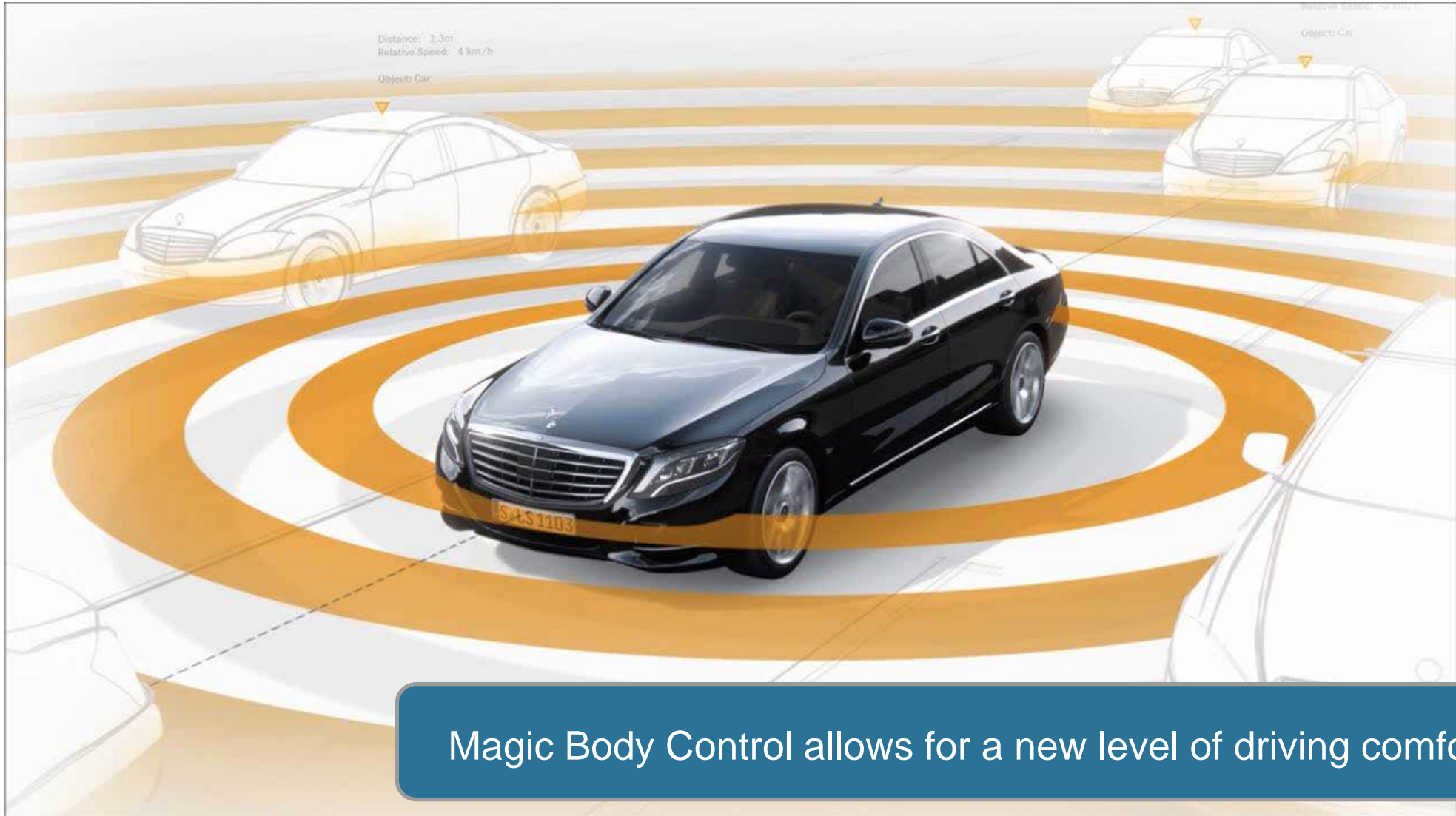


6% of all accidents with pedestrians can be completely avoided
In **41%** the seriousness of injury will be significantly reduced

Example: MAGIC BODY CONTROL



Example: MAGIC BODY CONTROL



Example: Autonomous driving ...



Example: Autonomous driving - on the highway and in the city ...



The future comes as standard in your new S-Class!

Mercedes-Benz USP:

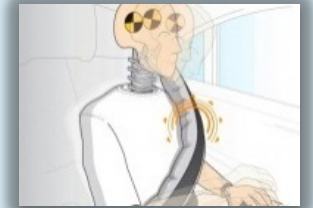
→ INTELLIGENT DRIVE with stereo camera and sensor fusion.

Three dimensions of new S-Class engineering

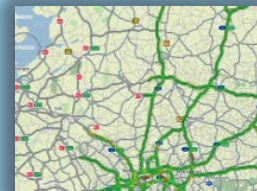
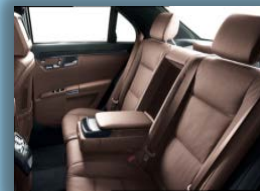
Efficient Technology



Intelligent Drive - „Networked with all senses“



+



S-Class Ambience - “The Essence of Luxury“

S-Class Ambience – “The Essence of Luxury”



- High quality materials
- Unmatched perfection
- Two large high-resolution TFT displays

Control and display concept: elegant and innovative new control center



Always on and connected with COMAND Online



- COMAND Online features now:
- Internet connectivity
 - Social media
 - Live-Traffic data

First Class ambience not only in the front seats



Mobile office and center of wellbeing

First-Class rear suite in the new S-Class



New level of seating comfort

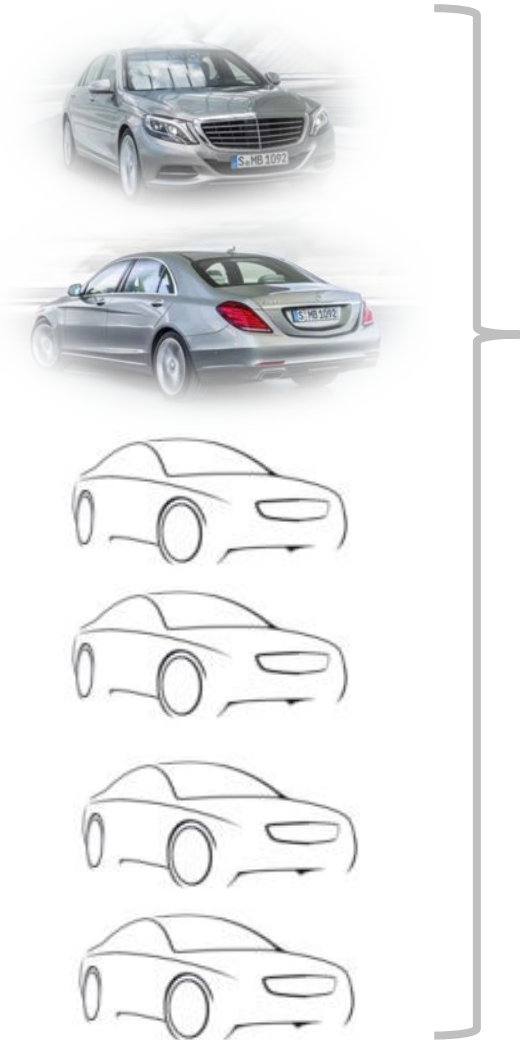
Mercedes-Benz vehicle architecture



Mercedes-Benz
Rear-Wheel Architecture

Mercedes-Benz
Front-Wheel Architecture

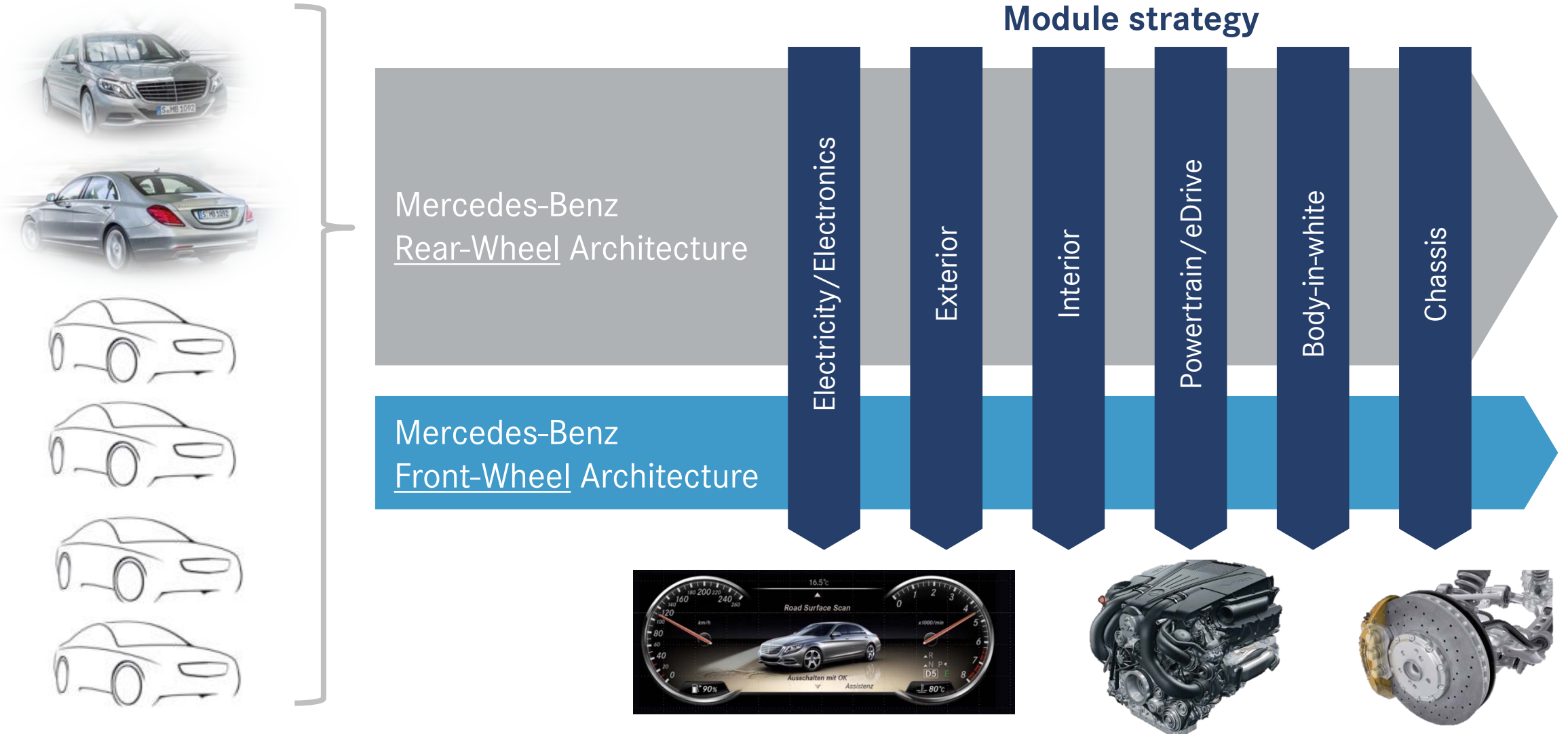
S-Class Family: Six variants with commonality rates of up to 90%



Mercedes-Benz
Rear-Wheel Architecture

Mercedes-Benz
Front-Wheel Architecture

S-Class Family fully benefits from our common MBC module strategy



Digital engineering: improved time to market, quality and cost/efficiency

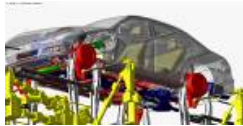


Digital prototype

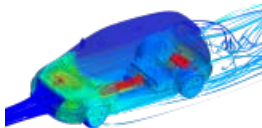
Simulation
passive
safety



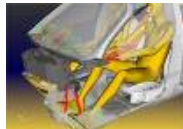
Structural
durability



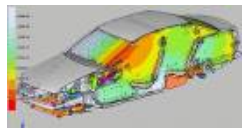
Thermal
validation



Thermal
comfort



Simulation
NVH / CO2

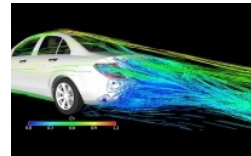


High-tech test benches

Driving
simulator



Wind tunnel



Ride &
handling



Climate
wind tunnel



Validation testing



Vision Accomplished



Disclaimer

This document contains forward-looking statements that reflect our current views about future events. The words “anticipate,” “assume,” “believe,” “estimate,” “expect,” “intend,” “may,” “can,” “could,” “plan,” “project,” “should” and similar expressions are used to identify forward-looking statements. These statements are subject to many risks and uncertainties, including an adverse development of global economic conditions, in particular a decline of demand in our most important markets; a worsening of the sovereign-debt crisis in the Eurozone; a deterioration of our refinancing possibilities on the credit and financial markets; events of force majeure including natural disasters, acts of terrorism, political unrest, industrial accidents and their effects on our sales, purchasing, production or financial services activities; changes in currency exchange rates; a shift in consumer preference towards smaller, lower-margin vehicles; or a possible lack of acceptance of our products or services which limits our ability to achieve prices and adequately utilize our production capacities; price increases in fuel or raw materials; disruption of production due to shortages of materials, labor strikes or supplier insolvencies; a decline in resale prices of used vehicles; the effective implementation of cost-reduction and efficiency-optimization measures; the business outlook of companies in which we hold a significant equity interest; the successful implementation of strategic cooperations and joint ventures; changes in laws, regulations and government policies, particularly those relating to vehicle emissions, fuel economy and safety; the resolution of pending government investigations and the conclusion of pending or threatened future legal proceedings; and other risks and uncertainties, some of which we describe under the heading “Risk Report” in Daimler’s most recent Annual Report. If any of these risks and uncertainties materialize, or if the assumptions underlying any of our forward-looking statements prove to be incorrect, the actual results may be materially different from those we express or imply by such statements. We do not intend or assume any obligation to update these forward looking statements since they are based solely on the circumstances at the publication date.